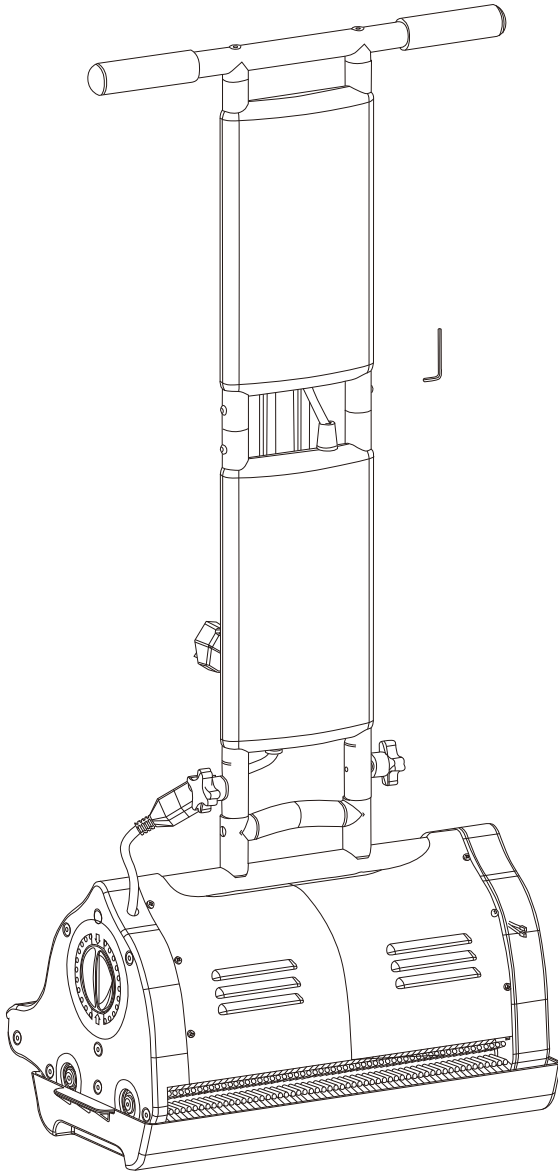


ENVIRODRI



CARPET CLEANING MACHINE INSTRUCTION MANUAL Model: GEN4



TABLE OF CONTENTS

INTRODUCTION

How to use this Manual	2-0
Machine Data Log/Overview.....	2-1

SAFETY

Important Safety Instructions.....	3-0
Hazard Intensity Level	3-1
Earthing and Grounding Instructions	3-2

OPERATIONS

Product Technical Specifications	4-0
How the Machine Works.....	4-1
Machine Operation	4-2
Pre-run Inspection.....	4-2
Starting Machine.....	4-2
Machine Shut-down and Storage.....	4-2

MAINTENANCE

Brush Cleaning and Maintenance.....	5-0
Machine Maintenance	5-0
Daily Maintenance	5-0
Periodic Maintenance.....	5-0
Annual Maintenance	5-0
Machine Troubleshooting.....	5-1
Electrical Diagram.....	5-2

WARRANTY

Cleantec Innovation Ltd Warranty Policy	6-0
Warranty Card.....	6-1
Machine Warranty Request Form.....	6-2

SPARE PARTS LIST.....	1-7
------------------------------	------------

INTRODUCTION

This manual contains the following sections:

- HOW TO USE THIS MANUAL
- SAFETY
- OPERATIONS
- MAINTENANCE

the HOW TO USE THIS MANUAL section will tell you how to find important information for ordering correct spare parts.

Parts may be ordered from authorized envirodri dealers. When placing an order for parts, the machine model, and machine serial number are important, Refer to the MACHINE DATA box which is filled out during the installation of your machine. The MACHINE DATA box is located on the inside of the front cover of this manual.

MODEL	_____
DATE OF PURCHASE	_____
SERIAL NUMBER	_____
SALES REPRESENTATIVE #	_____
DEALER NAME	_____
OPERATIONS GUIDE NUMBER	_____

The model and serial number of your machine is on the operator's left hand side panel of base.

The SAFETY section is to familiarize the operator with the operation and function of the machine.

The MAINTENANCE section contains preventive maintenance to keep the machine and its components in good working condition.

MACHINE DATA LOG/OVERVIEW

MODEL	_____
DATE OF PURCHASE	_____
SERIAL NUMBER	_____
SALES REPRESENTATIVE #	_____
DEALER NAME	_____
OPERATIONS GUIDE NUMBER	_____

YOUR DEALER

Name: _____

Address: _____

Phone Number: _____

OVERVIEW

The GEN4 Carpet Cleaning Machine is designed to maintain your carpet using the envirodri MicroSponges, dry carpet cleaning system. The machine has two counter rotating brushes that enable the envirodri Microsponges to be brushed into the carpet. The envirodri Microsponges encapsulate the dirt when being brushed into the carpet. The MicroSponges can then be vacuumed up leaving the carpet dry. The brushes also help to raise the pile of the carpet, giving it a lush groomed appearance.

IMPORTANT SAFETY INSTRUCTIONS

**When using an electrical appliance, basic precaution must always be followed, including the following:
READ ALL INSTRUCTIONS BEFORE USING THIS MACHINE.**



WARNING

This machine is for commercial use.

To reduce the risk of fire, electric shock, or injury:

Connect to a **properly grounded/earthed outlet**. See Grounding and Earthing Instructions.

Do not leave the machine unattended. Unplug machine from power outlet when not in use and always before maintenance or service.

Do not allow machine to be used as a toy. **Close attention** is necessary when used by or near children.

Use only as described in this manual. Use only manufacturer's recommended components and attachments.

Do not use damaged electrical cord or plug. Follow all instructions in this manual concerning grounding/earthing the machine. If the machine is **not working properly**, has been dropped, damaged, left outdoors, or dropped into water, return it to an authorized service centre.

Do not pull or carry machine by electrical cord, use as a handle, close a door on cord, or pull cord around sharp edges or corners.

Do not run machine over cord or allow the rotating brushes to come in contact with the cord. **Keep** cord away from heated surfaces.

Do not unplug machine by pulling on cord. To unplug, grasp the electrical plug, not the electrical cord.

Always use cable restraint provided and wind the cable around the cable holder on the handle. For quick release of the electrical cable rotate the cable holder 180 degrees.

Do not handle the electrical plug or machine with wet hands.

Do not operate the machine with any openings blocked. keep openings free of debris that may reduce airflow.

Machine is designed for indoor use only and must not be operated or stored outdoors in wet conditions.

Turn off all controls before unplugging.

Machine can cause a fire when operating near flammable vapours or materials. Do not operate this machine near flammable fluids, dust or vapours.

Only the brushes provided with the machine or those specified by the manufacturer can be used. The intended use of the brushes is specifically for the cleaning of carpeting and should not be used in any other way.

This machine is suitable for commercial use, for example in hotels, schools, hospitals, factories, shops and offices.

Maintenance and repairs must be done by qualified personnel.

SAVE THESE INSTRUCTIONS

HAZARD INTENSITY LEVEL

The following symbols are used throughout this guide as indicated in their descriptions:

HAZARD INTENSITY LEVEL

There are three levels of hazard intensity identified by signal words -**WARNING** and **CAUTION** and **FOR SAFETY**. The level of hazard intensity is determined by the following definitions:



WARNING

WARNING - Hazards or unsafe practices which COULD result in severe personal injury or product or property damage



CAUTION

CAUTION - Hazards or unsafe practices which could result in minor personal injury or product or property damage.

FOR SAFETY: To identify actions which must be followed for safe operation of equipment. Report machine damage or faulty operation immediately. Do not use the machine if it is not in proper operating condition. Following is information that signals some potentially dangerous conditions to the operator or the equipment. Read this information carefully. Know when these conditions can exist. Locate all safety devices on the machine. Please take the necessary steps to train the machine operating personnel

FOR SAFETY:

NO NOT OPERATE MACHINE:

- Unless Trained and Authorized.
- Unless Operation Guide is Read and understood.
- In Flammable or Explosive areas.
- In areas with possible falling objects.
- In wet or outdoor areas.

WHEN SERVICING MACHINE:

Avoid moving parts. Do not wear loose clothing; jackets, shirts, or sleeves when working on the machine. Use envirodri approved replacement parts.

EARTHING AND GROUNDING INSTRUCTIONS

THIS PRODUCT IS FOR COMMERCIAL USE ONLY.

ELECTRICAL - USA:

In the USA this machine operates on a standard 15 amp 115V, 60 Hz, A.C. power circuit. The amp, hertz, and voltage are listed on the data label found on each machine. Using voltages above or below those indicated on the data label will cause serious damage to the motors:

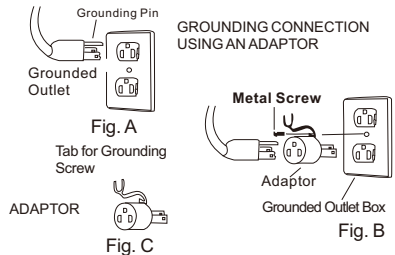
EXTENSION CORDS:

If an extension cord is used, the wire size must be at least one size larger than the power cord on the machine, and must be limited to 50 feet (15.5m) in length.

GROUNDING INSTRUCTIONS:

This appliance must be grounded. If it should malfunction or break down, grounding provides a path of least resistance for electric current to reduce the risk of electric shock. This appliance is equipped with a cord having an equipment-grounding conductor and a grounding plug. The plug must be inserted into an appropriate outlet that is properly installed and grounded in accordance with all local codes and ordinances.

This appliance is intended for use on a nominal 120-volt circuit, and has a grounded plug that looks like the plug in "Fig. A." A temporary adaptor that looks like the adaptor in "Fig. C" may be used to connect this plug to a 2-pole receptacle as shown in "Fig. B," if a properly grounded outlet is not available. The temporary adaptor should be used only until a properly grounded outlet (Fig. A) can be installed by a qualified electrician. The green colored rigid ear, lug, or wire extending from the adaptor must be connected to a permanent ground such as a properly grounded outlet box cover. Be sure to fasten the grounding tab with a metal faceplate screw, whenever the adaptor is used



Note: Adaptors are not allowed in Canada.

Improper connection of the equipment grounding conductor can result in a risk of electric shock. Check with a qualified electrician or service person if you are in doubt as to whether the outlet is properly grounded. Do not modify the plug provided with the appliance - if it will not fit the outlet; have a proper outlet installed by a qualified electrician.

EARTHING AND GROUNDING INSTRUCTIONS

ELECTRICAL - UK:

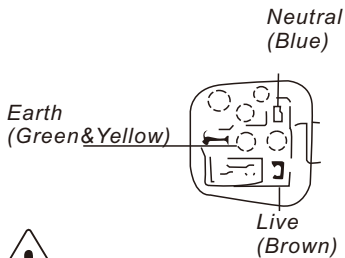
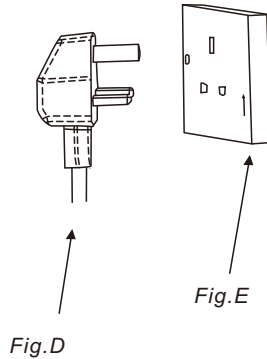
In the UK this machine operates on a standard 240 V, 50 Hz, A.C. power circuit. The amp, herz, and voltage are listed on the data label found on each machine. Using voltages above or below those indicated on the data label will cause serious damage to the motors.

GROUNDING INSTRUCTIONS:

The UK machine is intended for use on a nominal 240 V, and it has a grounded plug

with three rectangular prongs that form a triangle, which looks like the plug in "Fig D." This plug has been designed to be plugged into Power Outlets similar to the one shown in "Fig E." It complies with the BS 1363 British Standard. The molded plug incorporates a 10 Amps cartridge Fuse. The Wire colour coding for the UK is as follows:

- > Neutral: Blue Wire
- > Live: Brown Wire
- > Earth: Green & Yellow



WARNING

Do not use the UK 'G'type plug in conjunction with any type of adators

Only operate the GEN4 envirodri machine with a Cord-set certified and provided by the manufacturer

EARTHING AND GROUNDING INSTRUCTIONS

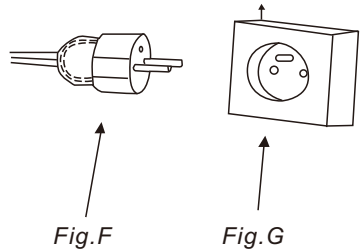
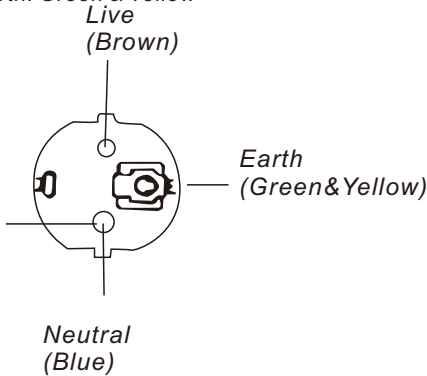
ELECTRICAL - EUROPE:

In Europe this machine operates on a standard 230 V, 50 Hz, A.C. power circuit. The amp, herz, and voltage are listed on the data label found on each machine. Using voltages above or below those indicated on the data label will cause serious damage to the motors.

GROUNDING INSTRUCTIONS:

The European machine is intended for use on a nominal 230 V, and it has a type 'F' plug with two round prongs and two grounding clips on the side of the plug (Fig F). The machine is intended to be plugged into outlets that look like the one shown in "Fig. G." The Wire colour coding for Europe is as follows:

- > Neutral: Blue Wire
- > Live: Brown Wire
- > Earth: Green & Yellow



WARNING

Do not use type 'F' plug in conjunction with any type of adaptors.

Only operate the GEN4 envirodri machine with a Cord-set certified and provided by the manufacturer.

PRODUCT TECHNICAL SPECIFICATIONS

1. SPECIFICATION OF US MACHINES

ITEM	DIMENSION/CAPACITY
Electrical	120V
Nominal Power	650W
Rated Amperage	7.5 Amps
Brush Width	16 inches (40 cm)
Brush RPM	550 RPM
Wheels	2 inches (5 cm) non-marking black
Dimensions - Weight	46 lbs. (21 kg)
Dimensions - Height with handle	44 inches(112 cm)
Dimensions - Depth	12 inches (30 cm)
Power Cord	33 feet (10 m)

2. SPECIFICATION OF UK AND EUROPEAN MACHINES

ITEM	DIMENSION/CAPACITY
Electrical	230V
Nominal Power	550W (Nikoda motor: 3/4 HP)
Rated Amperage	3.5Amps
Brush Width	16 inches (40 cm)
Brush RPM	500 RPM
Wheels	2 inches (5 cm) non-marking black
Dimensions - Weight	46 lbs. (21 kg)
Dimensions - Height with handle	44 inches(112 cm)
Dimensions - Depth	Dimensions - Depth 12 inches (30 cm)
Power Cord	33 feet (10 m)

EARTHING AND GROUNDING INSTRUCTIONS

Congratulations!

You are now the proud owner of the GEN4 Dry Carpet Cleaning Machine.

This machine is designed to maintain your carpet using the envirodri Dry Carpet Cleaning System. By using the envirodri MicroSponges you can perform regular light cleaning and grooming of your carpet very quickly, and have the carpet dry and ready for use immediately.

The GEN4 handle detaches for easy transportation and compact storage. The handle has a 180 degree movement for maximum flexibility and allows the machine to clean under low furniture. There are foot operated On/Off Switches and a handle lock keeping the handle in an upright position when placed in the tray.

The tray is for machine storage when not in use. This will protect the brush bristles from being crushed.

The brush guard protects the machine brushes by preventing loose threads or wires (telephone or electrical) getting caught-up in the brushes.

This appliance conforms with the following international and national safety directives:

- ›ANSY/UL 561 STD;
- ›CAN/CSA STD C22.2 NO 10-1965, R 2004;
- ›BS EN 60335 - 1:2002;
- ›BS EN 60335 - 2 - 10:2003.

The GEN4 Machine comes with a one year warranty on all parts except for cords, switches, gears, capacitors and brushes.

See envirodri New Machine Warranty Policy.

MACHINE OPERATION

PRE-RUN MACHINE INSPECTION

Perform a pre-run inspection to find possible problems that could cause poor performance or lost time from breakdown. Check the rating plate to confirm voltage and frequency is the same as the power supply. *NOTE: A 10% variation in voltage is acceptable.*

STARTING MACHINE

NOTE: Perform pre-run machine check before operating machine.

FOR SAFETY: Before starting machine, make sure that all covers are in place and secured properly.

After manually applying the envirodri MicroSponges onto the carpet commence cleaning following the steps below:

1. Take the machine out of the tray. Do this by leaning the machine back and applying pressure on the end of the tray with your foot. **NOTE:** Place the tray out of the way when machine in use.
2. Connect the machine to a power supply.
3. Release the handle lock.
4. Depress the 'ON' foot switch to engage machine as shown in the drawing provided.
5. Push and pull the machine slowly over the carpet.

NB: Best results are obtained by moving the machine in multiple directions and overlapping strokes.



WARNING

Flammable materials can cause an explosion or fire. Do not use near flammable or combustible substances or hot ashes or burning objects of any kind.



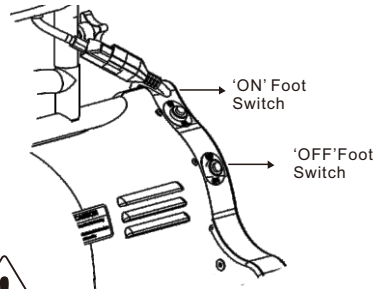
CAUTION

Always ensure that the handle lock is released prior to switching on the machine.

MACHINE SHUT-DOWN AND STORAGE

1. Depress the 'OFF' foot switch to power off machine as shown in the drawing provided.
2. Lock handle in the upright position.
3. Disconnect the power cord from the power supply. Wind the power cord around the cable holder on the handle.
4. Remove the brushes for cleaning. See Brush Cleaning and Maintenance section.
5. Once daily maintenance has been performed, place the machine back into the tray.

The machine is now ready for storage until the next use. Make sure to store your equipment in a dry place to prolong the life of your machine. Storage outdoors or if left unprotected could cause damage to your machine or its internal parts, therefore voiding your warranty.



CAUTION

When not in use or during interrupted cleaning, the machine must always be placed in the tray provided to prevent deformation of the brush bristles. Deformation of brush bristles can result in unbalanced running and excessive vibrating or instability of the appliance.

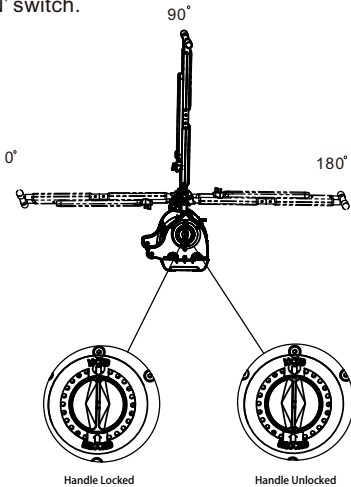
MACHINE OPERATION

MACHINE SAFETY DEVICE:

The GEM4 machine incorporates a Safety device which prevents its operation when the handle falls below 0° and/or 180°

Should the handle fall below these points, the machine power will be cut off. The power will not be reset simply by tilting the handle to the upright position.

In order to restart the machine after the power has been cut off, tilt the handle back to the 90° position and turn the machine on by pressing the 'ON' switch.



HANDLE LOCKING POSITION

The handle must be locked for transport and storage.

Lock the handle in an upright position (90°) following the steps below:

1. After having completed the cleaning process, tilt the handle back to the 90° position.

2. Turn the machine Locking Button (clockwise until the green dot aligns with the Locked arrow).

HANDLE UNLOCKING POSITION

Follow the steps below in order to unlock the handle:

1. Turn the machine Locking Button clockwise until the green dot aligns with the **Unlocked** arrow



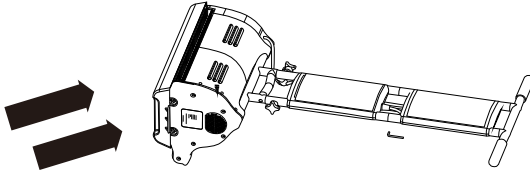
Do not use the GEN4 wheels to transport it over uneven surfaces. Only wheel the machine on even surface. The machine wheels have been for internal transportation 'only' on carpeted areas. Do not transport the machine downstairs.

MAINTENANCE

BRUSH CLEANING AND MAINTENANCE

After each session of carpet cleaning, the brushes and the brush housing should be cleaned. Before cleaning or changing the brushes, always unplug the machine from the power supply.

Brushes are removed without tools. Tilt and rest the machine on the handle. Push the brush shafts through with your finger. Alternatively, use a screw driver. Once unlocked, pull the brush shafts through the brushes and machine housings.



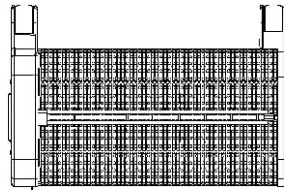
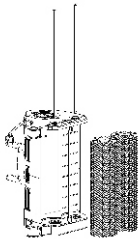
The brushes may be soaked in warm or hot water using mild detergent, and then rinsed with warm water.

NOTE: Brushes with crushed bristles can often be restored to original condition by soaking in hot water. Brushes should only be reassembled to the machine base when fully dry. Keep brushes clean and free from debris. Rotate brushes regularly as this will increase the life span of the brushes and ensure even wear.

Before reinstalling brushes, clean out machine brush housing by wiping with a clean damp cloth.

BRUSH ASSEMBLY

1- Push Components 4A and 4B towards component 2, until the 'Internal Hex Profiles' of both ends of components 4A and 4B are aligned with the hex profiles of the 'Top Brush Shaft Housing' of components 1 and 3. Assemble components 4A and 4B following the illustration in image 1, which shows the position of the bristles of components 4A and 4B in relation to machine



2- Align components 5A and 5B with the 'Top Brush Housing'

3- In order to complete the assembly of components 4A, 4B, 5A and 5B follow the steps below: Hold the 'Brush Top' with one hand and component 5A with the other.

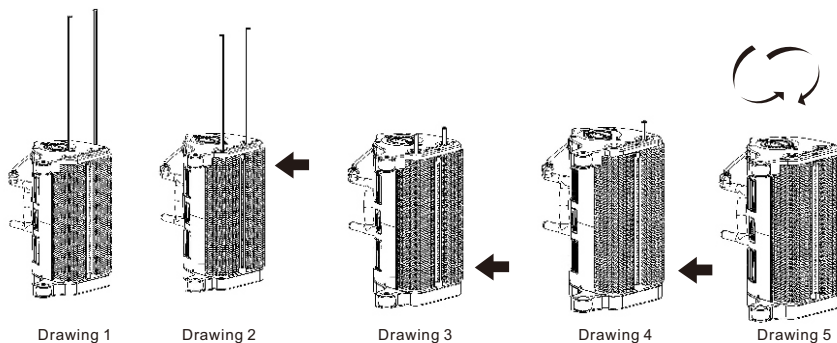
Slowly push component 5A through the 'Top Brush Shaft Housing' of component 1 until the 'Locking End' of component 5A reaches the 'Top Surface' of component 4A.

Align component 5A with the 'Top Internal Hex Profile' of component 4A following the steps below:

> Slowly push component 5A into the 'Top Internal Hex Profile' of component 4A

MAINTENANCE

- > As component 5 is being pushed into the 'Top Internal Hex Profile', move the 'Brush Top' away from and towards component 2 and simultaneously turn the 'Brush Top' clock and anticlockwise.
- ▶ Continue pushing component 5A through until it reaches the 'Bottom Internal Hex Profile' of component 4A.
- ▶ Align component 5A with the 'Bottom Internal Hex Profile' of component 4A by following the steps below:
 - ▶
 - > Slowly push component 5A towards the 'Bottom Internal Hex Profile' of component 4A.
 - > As component 5A is being pushed into the 'Bottom Internal Hex Profile', move the 'Brush Bottom' away from and towards component 2 and simultaneously turn the 'Brush Bottom' clock and anticlockwise.
- ▶ Push component 5A through the 'Bottom Internal Hex Profile' once it has been properly aligned. component 5A will reach the 'Bottom Brush Shaft Housing' as it goes through the 'Bottom Internal Hex Profile'.
- ▶ Align component 5A(which has already been pushed through the 'Top Brush Shaft Housing', the 'Top Internal Hex Profile' and the 'Bottom Internal Hex Profile') with the 'Bottom Brush Shaft Housing' by following the steps below:
 - > Slowly push component 5A towards the 'Bottom Brush Shaft Housing' of component 4A
 - > As component 5A is being pushed into the 'Bottom Brush Shaft Housing', move the 'Brush Bottom' away from and towards component 2 and simultaneously turn the 'Brush Bottom' clock and anticlockwise.
 - > Once component 5A is engaged with the 'Bottom Brush Shaft Housing', push it through the Housing until the 'Stop End' of component 5A touches to surface of the 'Top Brush shaft Housing'.
- ▶ Repeat the previous steps for components 4B and 5B.
- ▶ Ensure the brushes are properly assembled by turning both brushes towards the direction of the arrows shown in drawing 5.



MAINTENANCE

MACHINE MAINTENANCE

The GEN4 machine requires very little maintenance. Wipe down the machine periodically with a clean cloth and ensure motor air vents are not obstructed. DO NOT spray water directly over the top of machine.

During interruptions of the cleaning process, always place the machine into the tray or lay it on its side (gear housing) to prevent deformation of the brush bristles.



CAUTION

Deformation of the brush bristles can result in unbalanced running and excessive vibrating or instability of the appliance.

The machine motor is fitted with a thermal cut out. In the unlikely event of overloading, the motor cut out will automatically trip. It can be reset after approximately 30 seconds (or when the machine cools down) by pushing the ON switch.

DAILY MAINTENANCE

1. Clean and inspect brushes.
2. Clean and inspect brush housing and machine.
3. Inspect power cord for wear or damage. To prevent electrical shock replace cords that are frayed or have cracked insulation immediately.

PERIODIC MAINTENANCE

1. Check all handles, switches, knobs, electrical cables and connections on your machine for damage. Repair or replace immediately.
2. Inspect and/or replace brushes
3. Inspect and clean (if necessary) brush guard of any outside debris

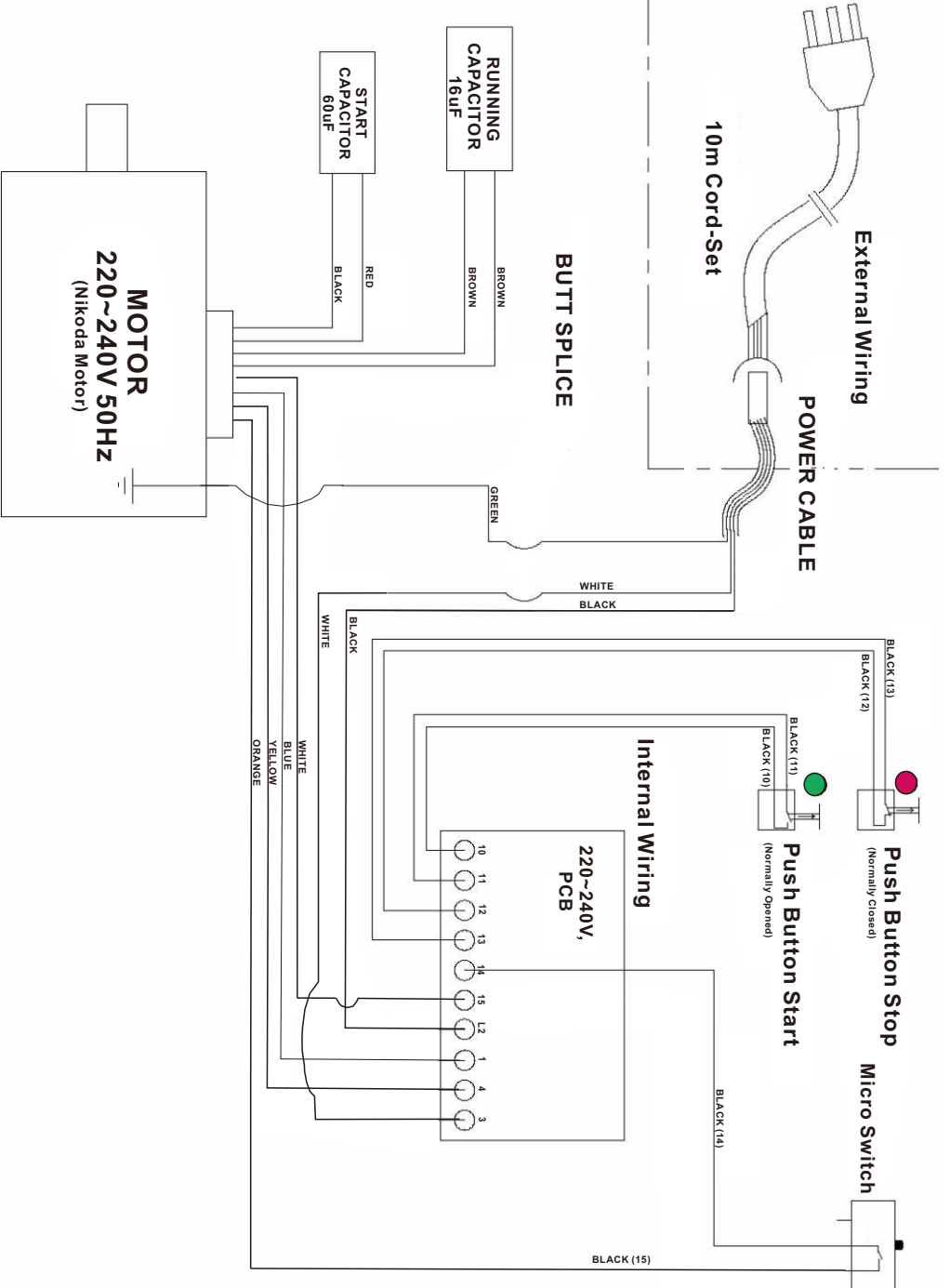
ANNUAL MAINTENANCE

1. Check all bearings for noise and wear.
2. Check motor for operation.
3. Check overall machine for operation.

MAINTENANCE

PROBLEM	CAUSE	SOLUTION
No power to machine	Dead electrical circuit breaker in fuse box	Check building circuit breaker
	Faulty power cord	Replace power cord
	Power switch failure	Replace power switch
	Faulty circuit breaker	Replace circuit breaker
Electrical Shock	Equipment not grounding	Follow earthing and grounding instructions
	Receptacle not grounded	Have an electrician inspect the building's wiring
Nuisance tripping of circuit breaker	Faulty circuit breaker	Replace circuit breaker
	Mechanical problem	Test circuit breaker for continuity. Higher amp draw may indicate faulty parts. Find parts not moving freely and repair or replace
Brush not turning or scrubbing	Faulty motor	Replace motor
	Gears worn	Replace gears not functioning
	Brushes worn	Replace brushes
Worn bearings	Bearing squealing or grinding in brush housing	Replace worn bearing

ELECTRICAL DIAGRAM



CLEANTEC INNOVATION LTD WARRANTY POLICY

CLEANTEC INNOVATION LTD -Limited Warranty

Cleantec Innovation Ltd warrants to the original purchaser only ("Buyer") that each new envirodri Machine shall be free from defect in material and workmanship upon delivery. Cleantec Innovation Ltd' liability is limited to repair or replacement of parts at the discretion of Cleantec Innovation Limited and/or the factory authorised service centre.

A warranty registration card is to be completed and returned within 14 days of purchase to register the purchases of your machine. Failure could result in any warranty claims not being undertaken.

Items not covered by warranty include, but are not limited to:

- ▶ Damage resulting from accidents abuse, misuse or acts of God(lightning/flood etc.)
- ▶ Damage in transit
- ▶ Rental units
- ▶ Failure due to lack of proper maintenance or care
- ▶ Relatively minor adjustments such as tightening of screws or bolts, etc. not connected with the placement of parts.
- ▶ Repairs or alterations by a person or organisation other than the factory or authorised repair centre.
- ▶ Normal wear items, handles, wheels, brushes**, gears**, power cords.

Cleantec Innovation Ltd equipment used in commercial applications has limited warranty of one year with exception of electric motors with carbon brushes, being subject to wear, their durability depends on the number of hours of use. It does not depend on the years of life of the machine. Example: In commercial application, The eventual substitution of the motor under warranty will therefore be effected only in case of total wear. If, after inspection of the returned machine or any part or parts, Cleantec Innovation Ltd in connection with the replacement or repair or any parts there of shall be at the buyer's responsibility.

Any parts returned to Cleantec Innovation Ltd for replacement shall become the property of Cleantec Innovation Ltd. In no Event shall cleantec Innovation Ltd be liable for any indirect, special, incidental, consequential or other damages including but not limited to damage or loss of property or equipment, lost revenues or profits, claims of customers, or harm to goodwill or business reputation directly or indirectly arising from the safe, handling or use of the envirodri Machine, or from any other costs relating thereto and Cleantec Innovation Ltd liability hereunder. Cleantec Innovation Ltd shall not be liable to the buyer for any claims, damages, injuries, actions or causes of action whatsoever based on negligence or strict liability. Cleantec Innovation Ltd Limited makes no warranty that its envirodri Machines shall be merchantable or that such machine shall be fit for any particular purpose. Moreover, Cleantec Innovation Ltd makes no expressed or implied warranties except for the limited warranty set forth herein. In addition no representation or warranty, expressed or implied, made by any dealer, sales representative, or field agent or Cleantec Innovation Ltd which is not specifically set forth herein shall be binding on Cleantec Innovation Ltd.

Genuine envirodri replacement parts shall be free from defects in material and workmanship for a period of 90 days after "installation" and shall be subject in all respects to the limitations and exclusions of this limited warranty.

Making a Claim

With each new machine sold a warranty card and Warranty Request Form will be supplied with the instruction manual of the new machine, this is standard practice.

PLEASE RETURN YOUR CARD AS FAILURE TO DO SO COULD INVALIDATE YOUR WARRANTY.

Upon finding a fault with your machine which you believe to still have warranty the "envirodri Machine Warranty Request Form(1)" should be completed in full and faxed to 08707 337734.

Once we have received your form a representative from Cleantec Innovation Ltd will call you within 24 hours to discuss the problem and arrange for collection of your machine if required. Bookings for collections are normally made for the same day but you will be advised when to expect a courier.

WARRANTY CARD

ENVIRODRI MACHINE WARRANTY CARD

Customer Name: _____

Customer Address: _____

Contact Name: _____ **Telephone No:** _____

E-mail: _____

Machine Model: E00-4-9001-US E00-4-9002-UK

E00-9003-EUROPE E00-4-9004-CHINA

Machine Serial Number: _____

Date of Purchase: _____

Distributor: _____

Distributor Address: _____

This form must be completed and returned to:

Cleantec Innovation Limited
Building 356, Gate C
Discovery Park, Ramsgate Road
SANDWICH
KENT
CT13 9ND
ENGLAND

Phone : +44(0)8707 337733
E-mail: info@cleantecinnovation.com

MACHINE WARRANTY REQUEST FORM

ENVIRODRI MACHINE WARRANTY REQUEST FORM TO BE COMPLETED BY CUSTOMER

Customer Name: _____

Address: _____

Contact Name: _____ Telephone No: _____

Machine Model: E00 - 4 - 9003 - Europe E00 - 4 - 9004 - CHINA

Machine Serial Number: _____

Date of Completion: _____

In this space please give information explaining the problem you are experiencing with your machine

Machine Model: E00 - 4 - 9001 - USA E00 - 4 - 9002 UK

**DO NOT RETURN A MACHINE UNLESS REQUESTED TO DO SO BY OUR
OFFICE
FOR OFFICE USE ONLY**

Date Form Received: _____ Received By: _____

Serial Number Verified: _____ Under Warranty: Yes No

Machine To Be Collected: Yes No Date of Collection: _____

Date Machine Arrived: _____ Serial number Checked: _____

Machine Tagged For Customer: Yes No

Date Engineer Inspected: _____ Inspected By: _____

ENGINEERS REPORT

Please write below the problems that you have found with this machine bearing in mind the customers comments on what he/she is experiencing.

MACHINE WARRANTY REQUEST FORM

Please detail if the goods are not warranty goods. i.e gears etc. Please also note parts needed to repair machine and labour time to repair.

Parts Needed For Repair

Part Number	Part Description	Qty Required	£
Labour Time Needed			

OFFICE USE ONLY

Date Report Received: _____ Received By: _____

Customer Informed of problem and if charges are due? Yes No

Quotation Given? Yes No Quotation Accepted? Yes No

Customer Order No: _____

Customer go ahead given? Yes No

Date Machine Booked For Repair: _____ Date Repair Complete: _____

Completed By: _____ Signature: _____

Date Machine Returned to Customer: _____

COURIER INFORMATION

Courier Booked: _____ Yes No Date Booked For Collection: _____

Consignment Note Number: _____ Courier: _____

SPARE PARTS LIST MODEL GEN4

CONFIGURATIONS:

E00-4-9001-US Model

E00-4-9002-UK Model

E00-4-9003-Europe Model

E00-4-9004-China Model

NB:

- The Bearing Pack (Item 29) is composed of 5 of 35x17x10 (6003) Bearings and 2 of 32x12x10 (6201) Bearings.
- The Machine Base Label Set (Item 43) is composed of the "ON" and "OFF" labels, the LOCKED/UNLOCKED label and the CAUTION label.
- Item 47 refers to the Wiring Harness that connects the "ON" and "OFF" Switches to the PCB.
- The Micro-Switch (Item 6) is sold with its Wiring Harness.

Handle Spare Parts List

ITEM NO.	PART NO.	DESCRIPTION	QTY PER PACK
1	E00-4-1002	Lower Handle Assembly	1
2	E00-4-1010	Upper Handle Assembly	1
3	E00-4-1003	Handle Linking Shaft	2
4	E00-4-1004	Connecting Bar Gen 4	2
5	E00-4-1005	Handle Linking Shaft	1
6	E00-4-4002	Cross Bar Assembly	1
7	E00-4-4001	Carry Handle Assembly	1
8	E00-4-1013	Locating Bush Top Handle	2
9	E00-2-2004	Handle Grip	2
10	E00-4-1049	Frontal Top Handle Cover	1
11	E00-4-1008	Frontal Bottom Handle Cover	1
12	E00-4-1009	Back Handle Cover	1
13	E00-2-1005	Cable Holder	1
14	E00-4-4014	Bottom Cable Holder Assembly	1
15	E00-0-3054	Screw M5 x 25 Stl Skt Cap	2
16	E00-0-3040	Screw M8 x 25 Stl Skt Cap	2
17	E00-0-3041	Screw M6 x 50 Stl Skt Csk	2
18	E00-0-3042	Screw M4 x 16 Self Tapping	16
19	E00-0-3043	Screw M5 x 10 Stl Skt Butt	4
20	E00-2-1010	Thumb Wheel	2
21	See Below	10m Cord Set	1
22	E00-0-3053	Screw M6 x 35 Stl Skt Cap Hd	2
23	E00-0-3046	Nut Nylon Insert M6	2
24	E00-4-4012	Handle Label Set	1

Handle Assembly & Sub Assemblies

ITEM NO.	PART NO.	DESCRIPTION	QTY PER PACK
1,2,3	E00-4-4008*	Complete Handle (With Labels)	1
1	E00-4-5005	Top Handle Assembly (With Label)	1
2	E00-4-5007*	Lower Handle Assembly(With Label)	1
3	E00-4-5006	Handle Kit	1
4	E00-4-4011	Cross Bar Assembly	1

Machine Twinning Parts

PART NO.	DESCRIPTION	QTY PER PACK
E00-4-4009	Twinning Bar Assembly 115V	1
E00-4-4017	Twinning Bar Assembly 230V	1
E00-4-4010	Y Junction Adapter 115V	1
E00-4-4015	Y Junction Adapter 230V	1

The twinning bar Assemblies contain one Junction Adapter

Brushes

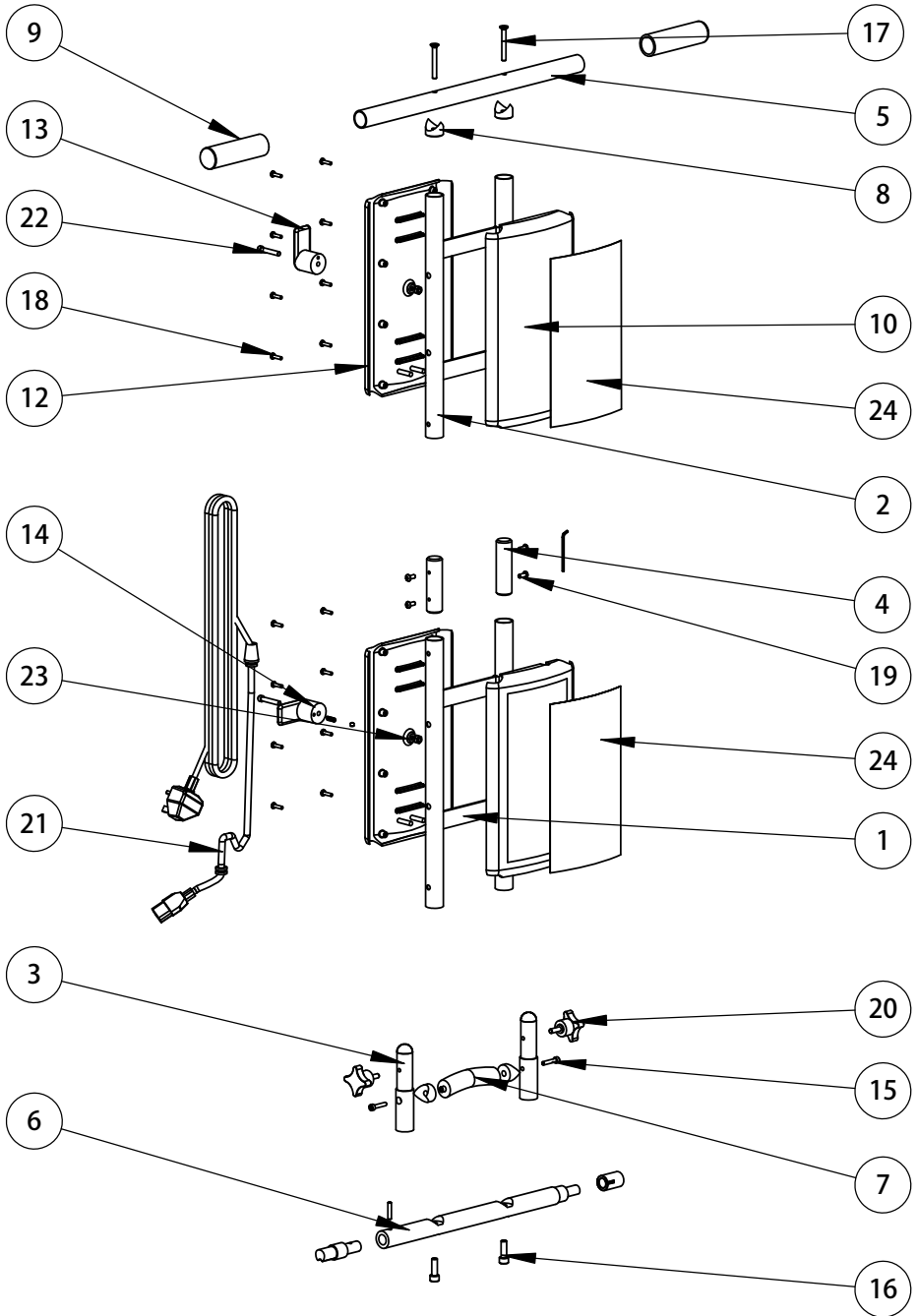
PART NO.	DESCRIPTION	QTY PER PACK
GEN 4G	Gold Brush	2
GEN4GW	Gold and White Brush	2
GEN4W	White (Standard) Brush	2
GEN4BW	Black and White Brush	2
GEN4B	Black Brush	2

10m Cord Set

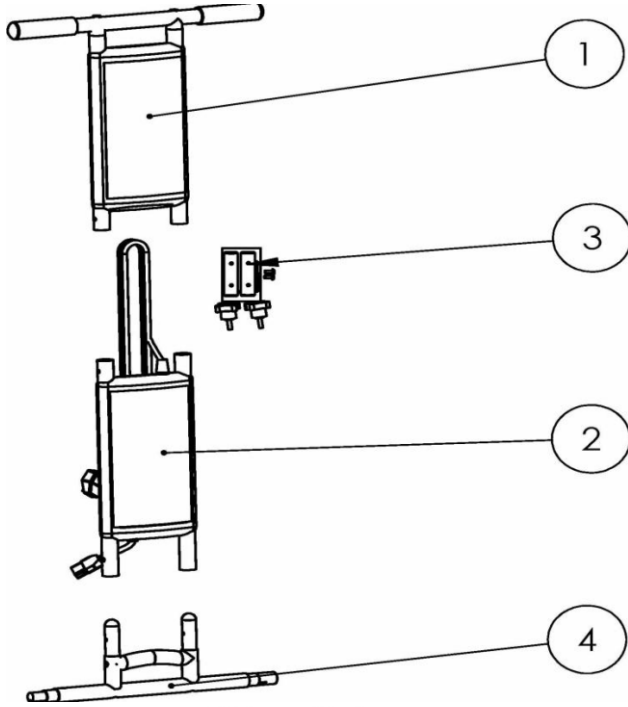
ITEM NO	US	UK	EUROPE	CHINA	JAPAN 50HZ	JAPAN 60HZ
21	E00-4-2021	E00-4-2023	E00-4-2022	E00-4-2032	E00-4-2033	E00-4-2033

* Please specify your Cord Set requirements when ordering these components

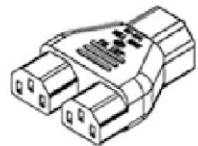
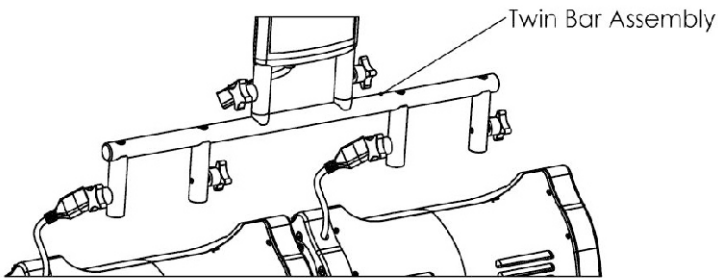
Handle Spare Parts Exploded Diagram-1



Complete Handle



Twinned Machine



Y Junction Adapter

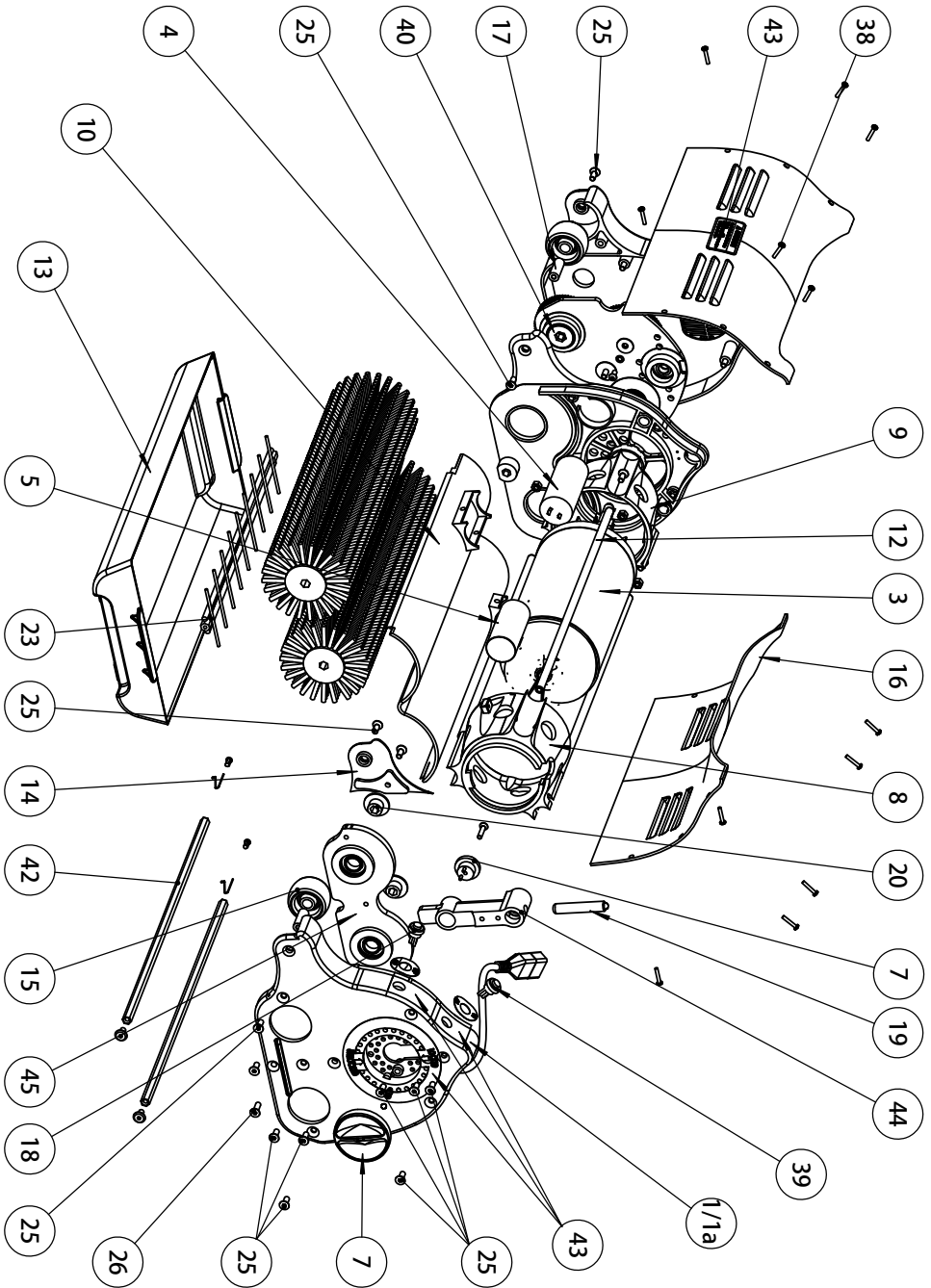
Machine Base Spare Parts List

ITEM NO.	PART NO.	DESCRIPTION	QTY PER PACK
1	E00-4-1055	Left End Cover Gen 4(Labels Sold Separately)	1
1a	E00-4-5011	Left End Housing Assembly	1
2	E00-4-1018	Right End Housing-Gear End Gen 4	1
3	See Below	Motor	1
4	See Below	Running Capacitor	1
5	See Below	Start Capacitor	1
6	E00-4-2003	Micro Switch	1
7	E00-4-4003	Locking Button Assembly	1
8	E00-4-1020	Motor Support Switch End	1
9	E00-4-1019	Motor Support Gear End	1
10	E00-4-1054	Splash Cover Moulded	1
11	E00-4-1016	Gear Cover Gen 4	1
12	E00-4-1021	Draw Bar Gen 4	3
13	E00-4-1022	Tray Gen 4	1
14	E00-4-1023	Wheel Axle Support	1
15	E00-4-1024	Wheel Gen 4	2
16	E00-4-1025	Machine Cover Gen 4 (Label Sold Separately)	2
17	E00-4-1026	Wheel Axle Gen 4	2
18	E00-4-2026	Main Switch Gen 4-OFF(RED)	1
19	E00-4-1028	Locking Pin Gen 4	1
20	E00-4-1038	Nylon Brush Shaft Housing Switch End	2
21	GEN4W	Brush White (Standard) Gen 4	2
22	E00-4-4006	Gear Plate Assembly	1
23	E00-4-1034	Cable Guard Gen 4	1
24	E00-4-3041	Screw M6 x 50 Stl Skt Csk	5
25	E00-4-3044	Screw M6 x 50 Stl Skt Csk	7
26	E00-4-3045	Screw M6 x 25 Stl Skt Csk	2
27	E00-4-1035	Gear RH Helical Gear 66T Gen 4	2
28	E00-4-1036	Gear LH Helical Gear 66T Gen 4	1
29	E00-4-4005	Bearings Pack	1
29a	E00-4-1058	Bearing (12 x 32 x 20(Ref: Gen 2 & 3))	1
30	E00-4-3031	Circlip Shaft 17mm	3
31	E00-4-1031	Gear LH Helical Gear 79T	1
32	E00-0-3016	Circlip Bore 32mm	1
33	E00-0-3015	Circlip Shaft 12mm	1
34	E00-4-4007	Motor Pinion Assembly	1
35	See Below	Printed Circuit Board	1
36	E00-0-3049	Screw Self Tapping M2.2x13	4
37	E00-4-1037	Nylon Spacer	2
38	E00-0-3048	Screw Self Tapping M3.9x12	12
39	E00-4-2005	Main Switch Gen 4-ON(Green)	1
40	E00-4-1052	Brush Shaft Housing Nylon, Gear End	2
41	E00-4-2024	Cable Power 0.75m	1
42	E00-4-5002	Brush Shaft Assembly	1
43	E00-4-4013	Label Set Machine Base	1
44	E00-4-1056	Locking Pin Housing	1
45	E00-4-1057	Brush Bearing Housing	1
46			
47	E00-4-2029	Main Switches Wiring Harness/Not Shown	1

GEN4 Machine-Space Parts

ITEM NO	US	UK	EUROPE	CHINA	JAPAN 50HZ	JAPAN 60HZ
2	E00-4-2004	E00-4-2018	E00-4-2018	E00-4-2018	E00-4-2034	E00-4-2037
4	E00-4-2009	E00-4-2019	E00-4-2019	E00-4-2019	E00-4-2035	E00-4-2038
5	E00-4-2010	E00-4-2020	E00-4-2020	E00-4-2020	E00-4-2036	E00-4-2039
36	E00-4-2006	E00-4-2040	E00-4-2040	E00-4-2040	E00-4-2007	E00-4-2006

Machine Base Spare Parts Exploded Diagram-1



Machine Base Spare Parts Exploded Diagram-2

